

Amern[®]

PIONEER SERIES



AN-SL-X

Double sided solar street light

CE (RoHS) IP65 IK09

INTRODUCTION

01 PART ONE
PRODUCT ADVANTAGE

02 PART TWO
SPECIFICATIONS

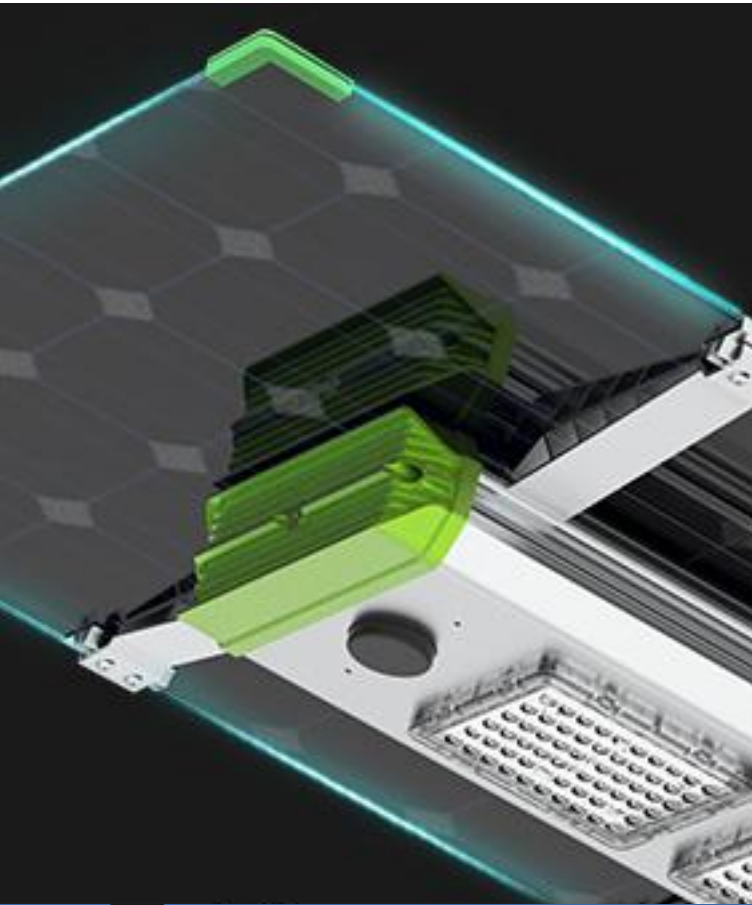
03 PART THREE
EXPLODED VIEW

04 PART FOUR
OPTICAL FEATURE

05 PART FIVE
DIMENSION FIGURE

06 PART SIX
PRODUCT DETAIL

07 PART SEVEN
PACKAGE DETAIL



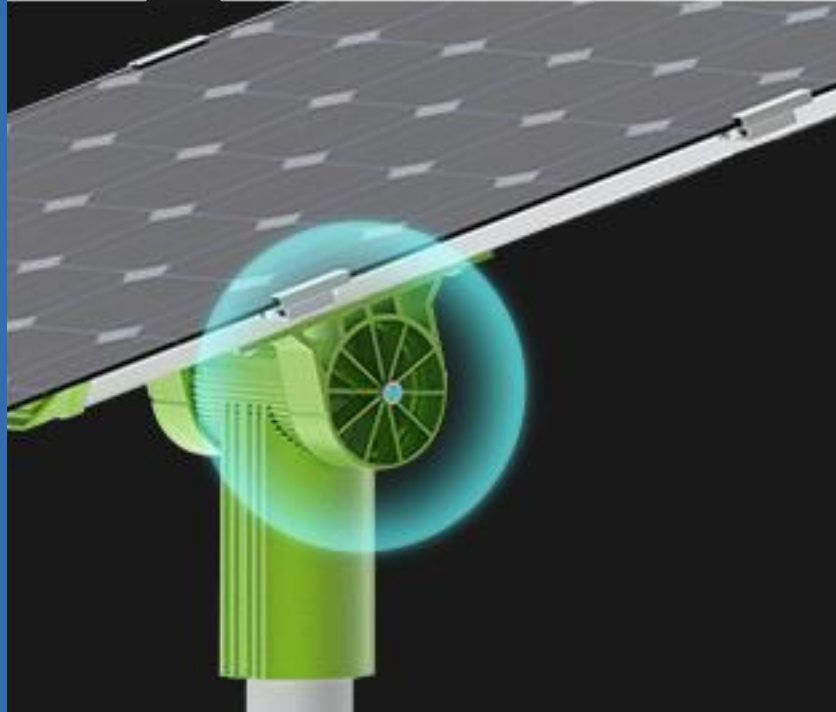
Product Advantage

ADJUSTABLE ANGLE BRACKET

180 degree arbitrary adjustment,
suitable for different installation roads.

INDEPENDENT DESIGN OF DOUBLE-SIDED SOLAR PANEL

Using high efficiency double-
sided solar cell, can increase
power generation by up to 30%.





REMOTE CONTROLER

4 lighting modes for optional.

HIGH POWER

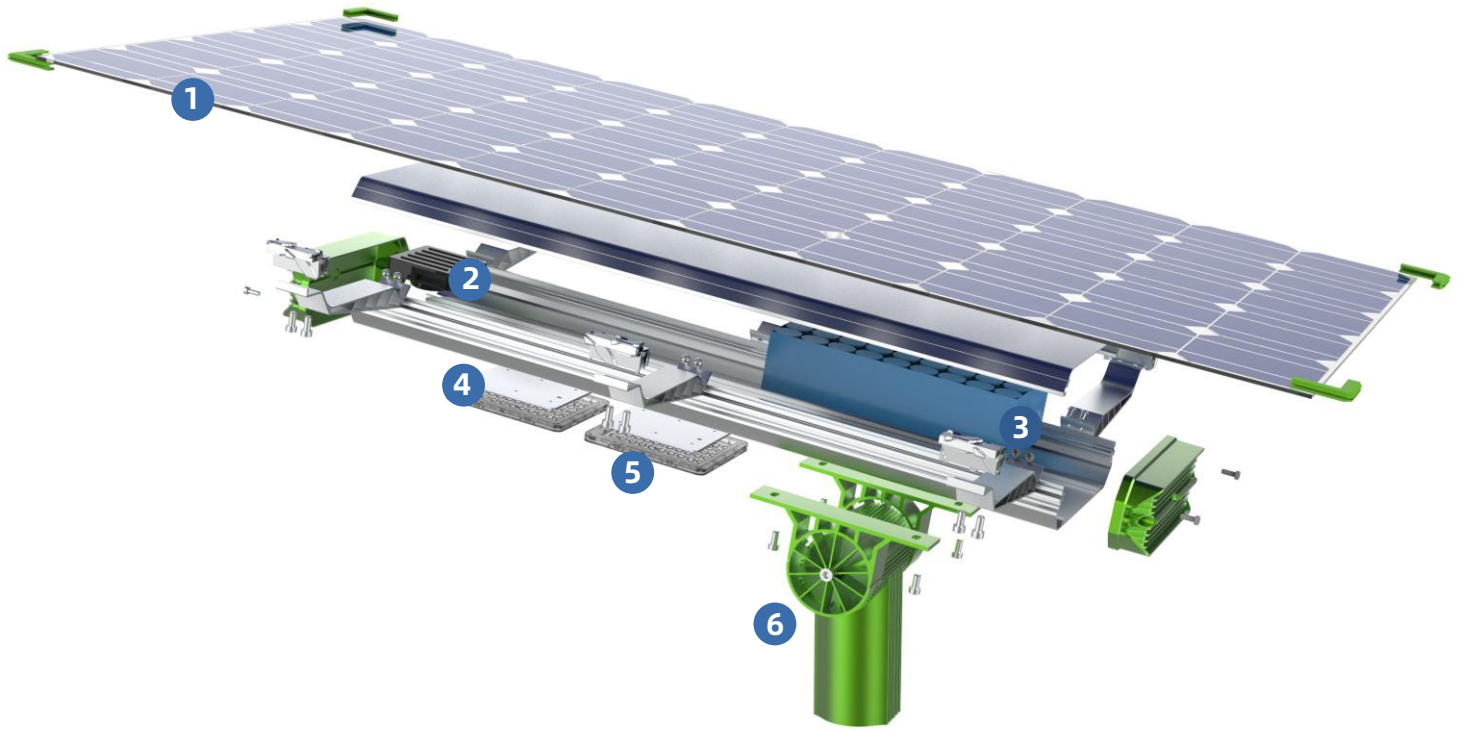
Up to 200W, specially design for engineering.

Product Advantage



PART TWO | SPECIFICATIONS

Model	AN-SL-X					
Power	60W	80W	100W	120W	150W	200W
LED	80pcs 3030	80pcs 3030	120pcs 3030	120pcs 3030	120pcs 5050	120pcs 5050
Luminous Flux	10000lm	13000lm	16700lm	20000lm	25000lm	33000lm
LiFePO4 Battery	12.8V/42AH	12.8V/57AH	12.8V/63AH	12.8V/72AH	12.8V/90AH	25.6V/66AH
Mono Solar Panel	18V120W	18V140W	18V160W	18V180W	18V220W	36V260W
Solar Charging Time	6-8 hours by bright sunlight					
Lighting Time In Rainy Day	10 days					
Lighting Mode	12hrs motion sensor control (Bright lighting 30secs when people move through the light)+Remote Controller				Time Control	
PIR	120° , >8m					
Material	Aluminium alloy + PMMA					
IP / IK Class	IP 65 / IK 10					
Work Temperature	-25°C to 65°C					
Install Height	5-8m	6-9m	7-10m	7-10m	8-12m	8-12m



1 Double-sided Solar Panel

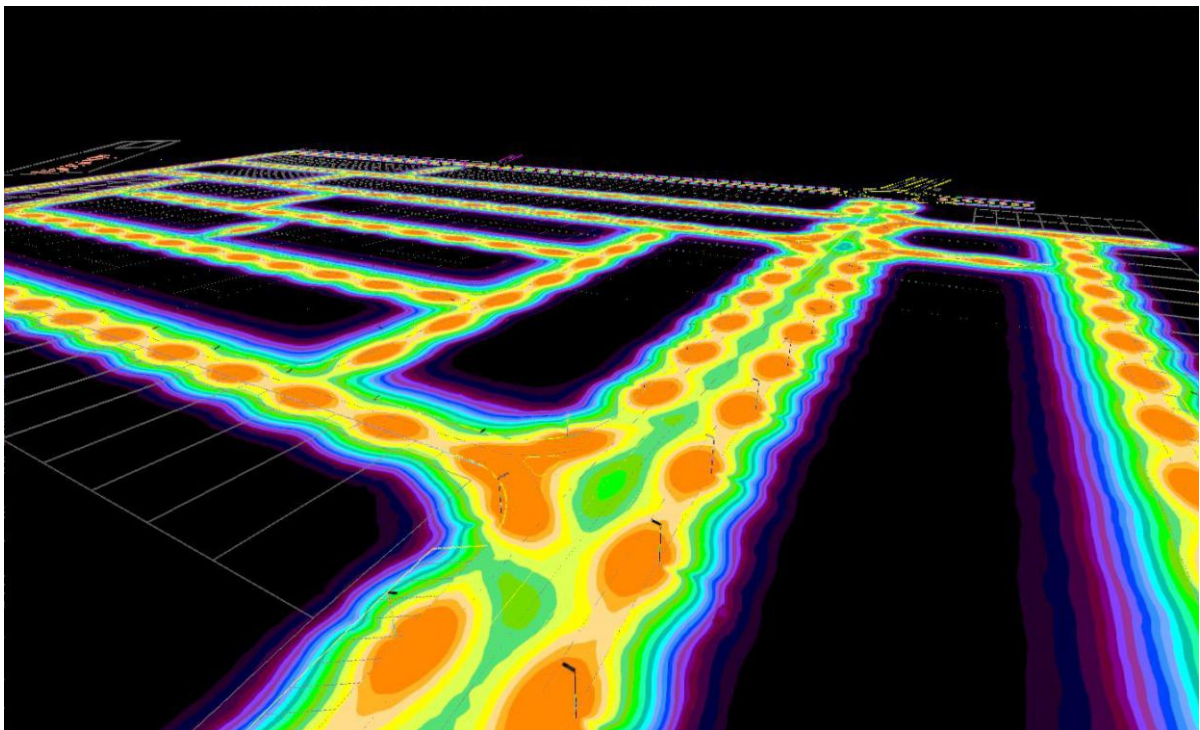
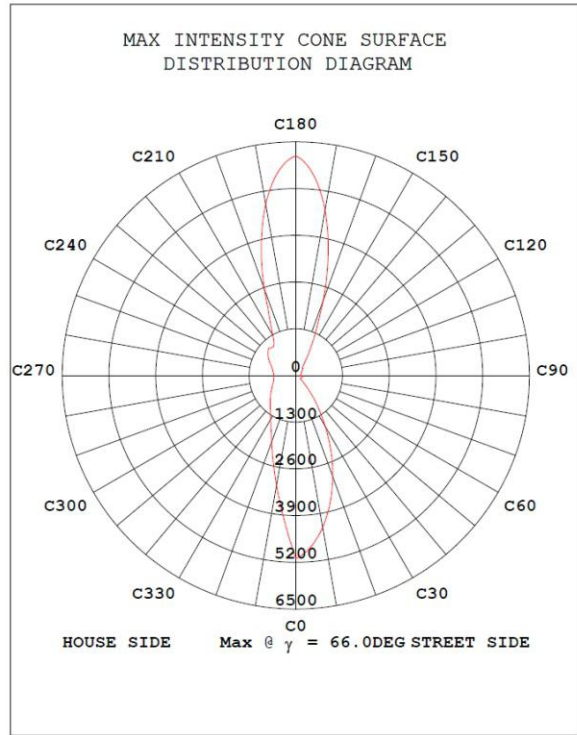
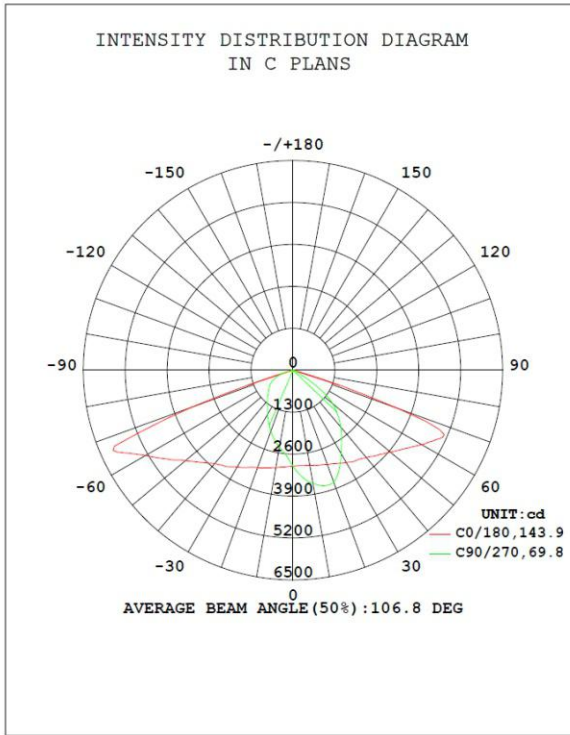
2 Control Module

3 LifePo4 Battery

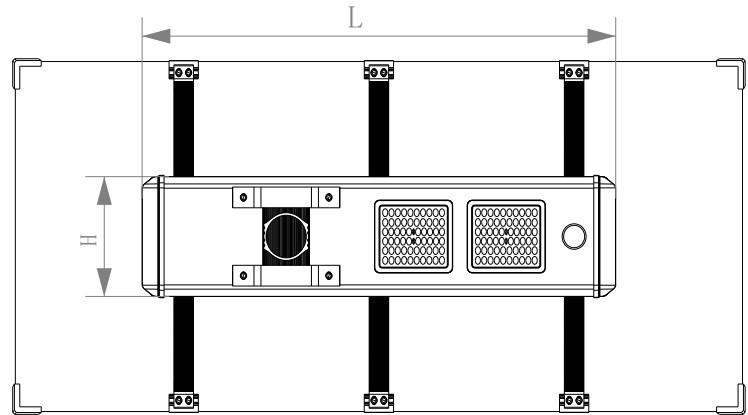
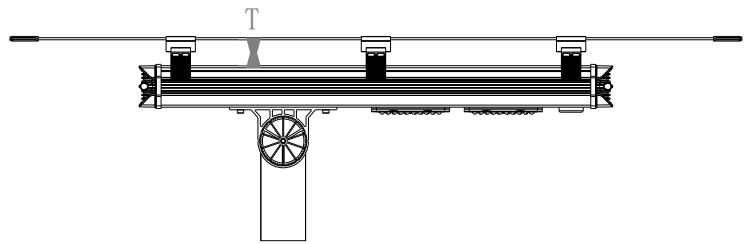
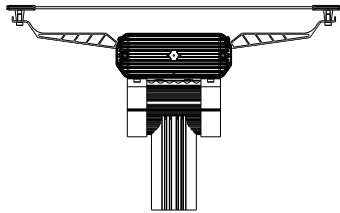
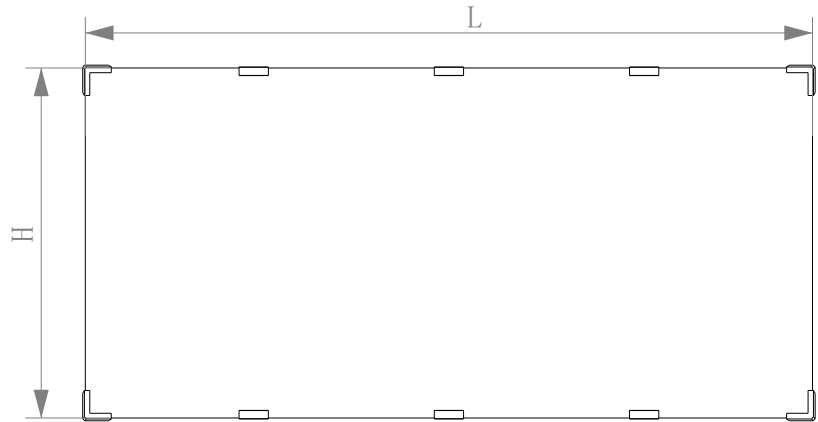
4 LED Plate

5 Optical LED

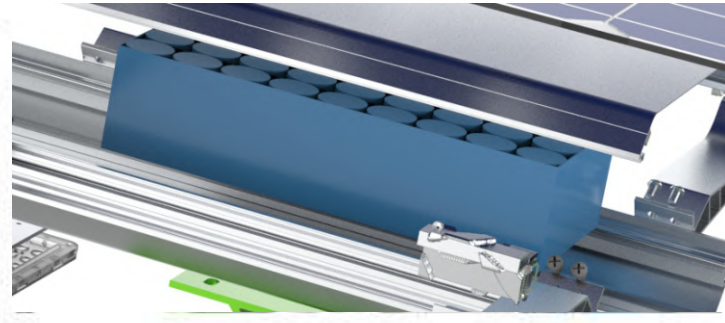
6 Adjustable Bracket



PART FIVE | DIMENSION FIGURE



Item No.	Solar panel size	Lamp Size
AN-SL-X-60W	1070*517mm	970*236*85mm
AN-SL-X-80W	1280*517mm	970*236*85mm
AN-SL-X-100W	1140*675mm	970*236*85mm
AN-SL-X-120W	1260*675mm	970*236*85mm
AN-SL-X-150W	1560*675mm	1000*236*85mm
AN-SL-X-200W	1980*675mm	1000*236*85mm



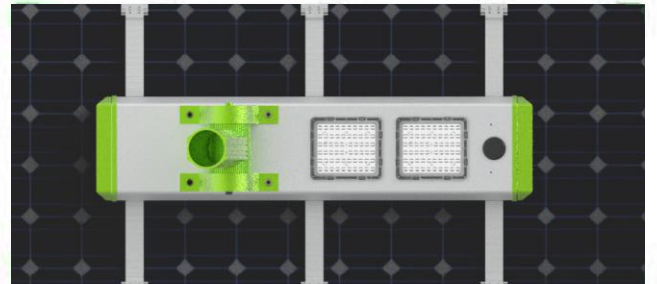
01

LifePo4 Battery
Brand new and big capacity

02

Double-sided solar panel

30% increase in power generation

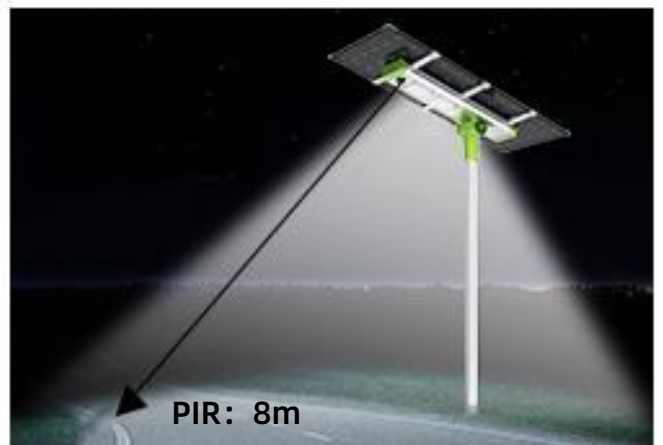


03

Bracket
180° adjustable

04

PIR sensor
More than 8m sensing distance



A N E R N / P I O N E E R / S E R I E S

*A*mern®

**THANKS
VERY
MUCH**